

# Insulin-Like Growth Factor 1 (IGF-1)



A hormone with a central role in stimulating growth and development in children and adolescents.

IGF-1 stands as a game-changer in the diagnostics field. From detecting growth disorders, diagnosing endocrine abnormalities, assessing nutritional status, or monitoring metabolic dysfunctions, IGF-1 levels are measured by physicians to collect the necessary information for patients to receive proper care. IGF-1 is also a valuable tool in tracking response to treatment and inform personalized and targeted therapy.

## Disease Areas

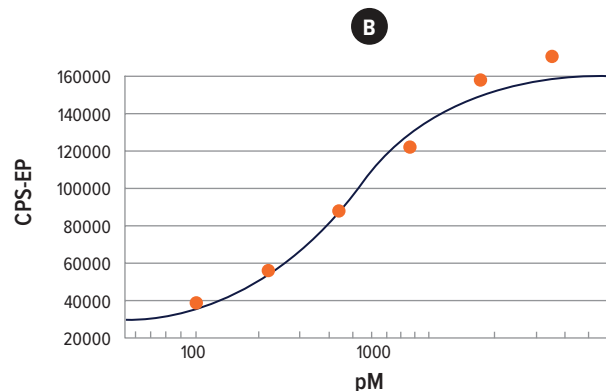
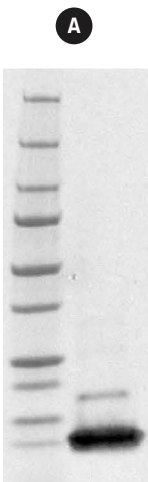
- Growth hormone deficiency
- Growth plate disorders
- Acromegaly
- Gigantism
- Diabetes

## Medix Biochemica Offers

- Secure supply
- High quality
- Lot to lot consistency
- Suitability for QC materials

## Product Information

- *Catalog number:* 610173
- *Name:* Recombinant IGF-1 Antigen
- *Form:* Recombinant human insulin-like growth factor 1 protein with C-terminal histidine tag, expressed in *E.coli*
- *Concentration:* Measured by A280, E0.1% = 0.55



**A.** Western blot image of IGF-1 detected by commercially available IGF-1 antibody. This product is a dimer with a major peak at ~10kDa and a small peak at 23kDa.

**B.** Binding curve of IGF-1 in FIA assay detected by commercially available IGF-1 antibody.

## Medix Biochemica