

# Pregnancy-Associated Plasma Protein (PAPP-A)



## Marker used in pregnancy screening, risk management, and better health outcomes

Prenatal screening tests can measure PAPP-A levels in the bloodstream. Elevated levels may indicate higher risks of fetal growth restriction, preterm birth, and preeclampsia. Early detection of abnormal PAPP-A levels can help improve health outcomes for both mom and baby.

### Medix Biochemica offers a native PAPP-A antigen

- Secure supply, at any scale
- Native sourced, purified from human serum
- High quality, lot to lot consistency
- Suitable for QC control and calibrator materials

### Product Information

#### Pregnancy-associated plasma protein (PAPP-A) derived from human serum

- Catalog number: 496-90
- Form: Frozen liquid in phosphate buffered saline, pH 7.4 with 0.02% Proclin 300
- Protein Concentration: > 1.0 mg/mL
- Purity: ≥ 80% SDS-PAGE

*Alternative name: Pappalysin-1*

#### Clinical Diagnostic Tool in

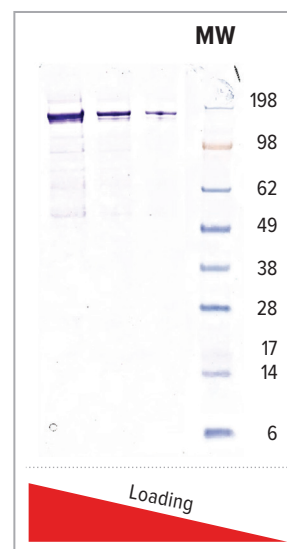
- Down syndrome
- Edward syndrome
- Patau syndrome
- Acute cardiovascular disease

#### Related Antibodies

- HM1014
- HM1015

#### Related Clinical Areas

- Fertility
- Cardiovascular
- Tumors



Reduced SDS-PAGE

## Other Clinical Significance of PAPP-A

PAPP-A regulates the availability and bioactivity of insulin growth factors (IGFs). In addition to its well established roles during pregnancy, PAPP-A has been identified as a potential biomarker for inflammation and atherosclerotic plaque instability. PAPP-A may serve as an oncogenic protein and a promising therapeutic target for breast cancer.

## Products and Ordering Information

### Native PAPP-A Antigens

Product Name	Product Code	Origin
PAPP-A antigen	496-90	Serum

### Monoclonal PAPP-A Antibodies

Product Name	Product Code	Subclass
PAPP-A antibody	HM1014	IgG1
PAPP-A antibody	HM1015	IgG1

### Related Biospecimens

Product Name	Information	Product Code
Amniotic fluid	Normal, single donor	991-02-S
Umbilical cord	Whole blood, single donor	991-06-S
	Serum, pooled donors	991-21-P
	Tissue, single donor	991-32
Serum	Breast cancer patient sample	991-24-S-BC
	Single donor, 1st/2nd/3rd trimester	991-24-PT1/2/3
Whole blood	Single donor, 1st/2nd/3rd trimester	991-50-PT1/2/3
Plasma	Breast cancer patient sample	991-58-S-BC
	Single donor, 1st/2nd/3rd trimester	991-58-PT1/2/3

Medix Biochemica offers 1st, 2nd, and 3rd trimester collection for both urine (991-03-PT1/2/3) and saliva (991-05-PT1/2/3). Inquire for more information.

Medix Biochemica provides a wide selection of high-quality antibodies, native and recombinant antigens, biospecimen materials, and molecular diagnostic reagents to support fertility, cardiovascular, and cancer disease testing.

## References

- Zhang, J., Zhang, Y., Li, L., Nian, Y., Chen, Y., Shen, R., & Ma, X. (2022). Pregnancy-associated plasma protein-A (PAPPA) promotes breast cancer progression. *Bioengineered*, 13(1), 291–307. <https://doi.org/10.1080/21655979.2021.2000724>
- X, S. (2022, October 31). Researchers determine the three-dimensional structure of PAPP-A. *Phys Org*. Retrieved May 15, 2023, from <https://phys.org/news/2022-10-three-dimensionalpapp-a.html>
- Gururajan, P., Gurumurthy, P., Nayar, P., Rao, G. S., Babu, R. S., Sarasabharati, A., & Cherian, K. M. (2012). Pregnancy-associated plasma protein-A (PAPP-A) as an early marker for the diagnosis of acute coronary syndrome. *Indian heart journal*, 64(2), 141–145. [https://doi.org/10.1016/S0019-4832\(12\)60049-2](https://doi.org/10.1016/S0019-4832(12)60049-2)
- Shiefa, S., Amargandhi, M., Bhupendra, J., Moulali, S., & Kristine, T. (2013). First Trimester Maternal Serum Screening Using Biochemical Markers PAPP-A and Free  $\beta$ -hCG for Down Syndrome, Patau Syndrome, and Edward Syndrome. *Indian journal of clinical biochemistry : IJCB*, 28(1), 3–12. <https://doi.org/10.1007/s12291-012-0269-9>
- Zhong, Q., Chu, H., Wang, G., Zhang, C., Li, R. K., Guo, F., Meng, X., Lei, X., Zhou, Y., Ren, R., Tao, L., Li, N., Gao, N., Wei, Y., Qiao, J., & Hang, J. (2022). Structural insights into the covalent regulation of PAPP-A activity by proMBP and STC2. *Cell Discovery*, 8(1). <https://doi.org/10.1038/s41421-022-00502-2>
- Bonno M, Oxvig C, Kephart GM, Wagner JM, Kristensen T, Sottrup-Jensen L, Gleich GJ. Localization of pregnancy-associated plasma protein-A and colocalization of pregnancy-associated plasma protein-A messenger ribonucleic acid and eosinophil granule major basic protein messenger ribonucleic acid in placenta. *Lab Invest*. 1994 Oct;71(4):560-6. PMID: 7526035.
- Antsaklis P, Fasoulakis Z, Theodora M, Diakosavvas M, Kontomanolis EN. Association of Low Maternal Pregnancy-associated Plasma Protein A with Adverse Perinatal Outcome. *Cureus*. 2019 Jun 17;11(6):e4912. doi: 10.7759/cureus.4912. PMID: 31423389; PMCID: PMC6692091.

# Medix Biochemica